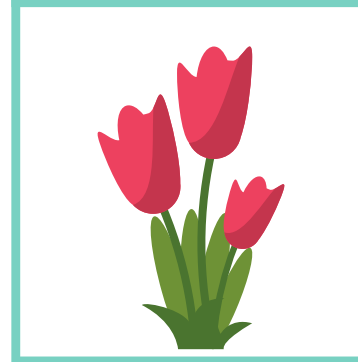
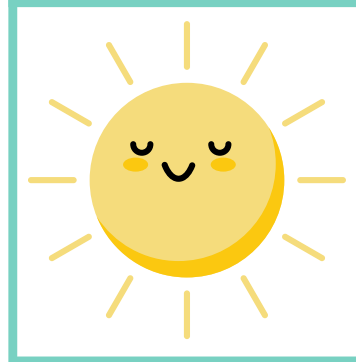
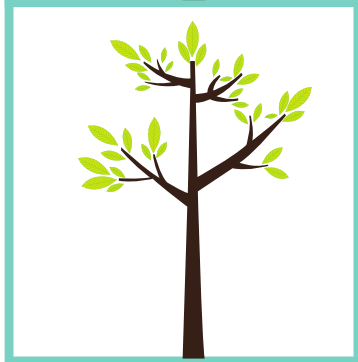
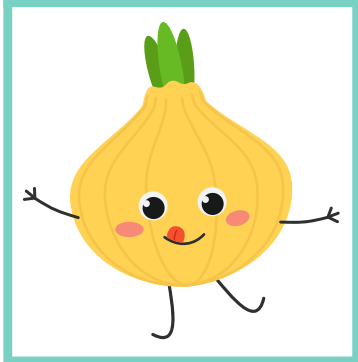
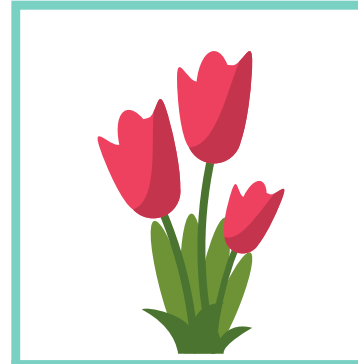
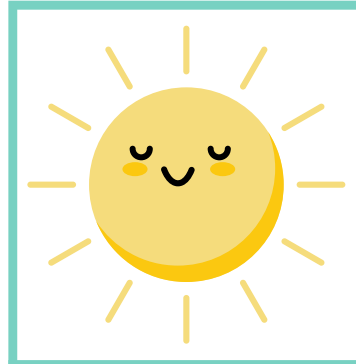
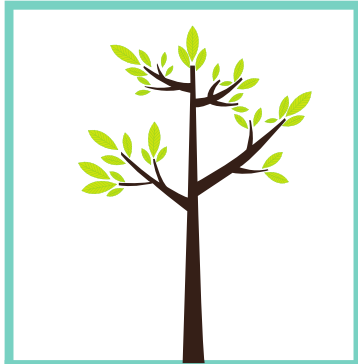
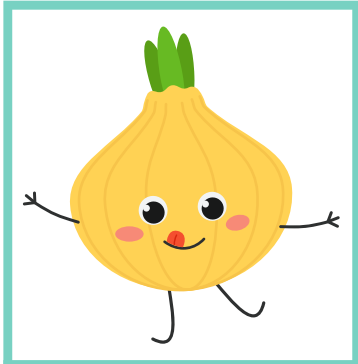
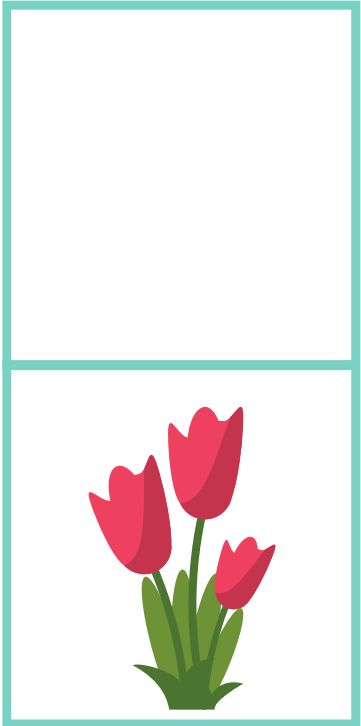
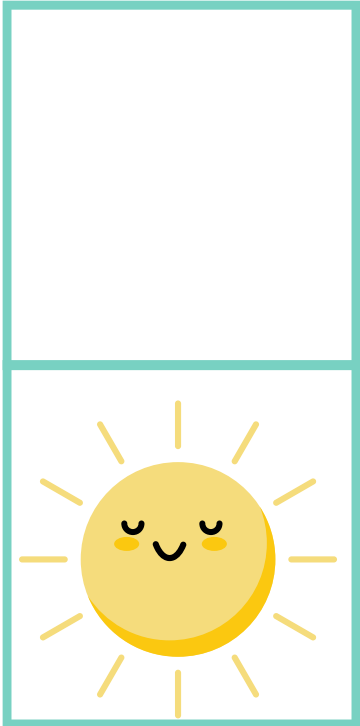
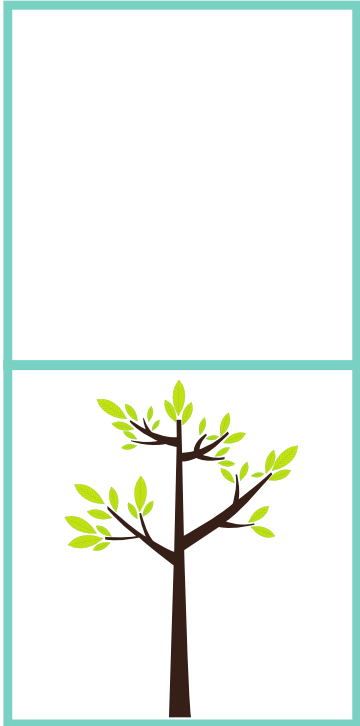
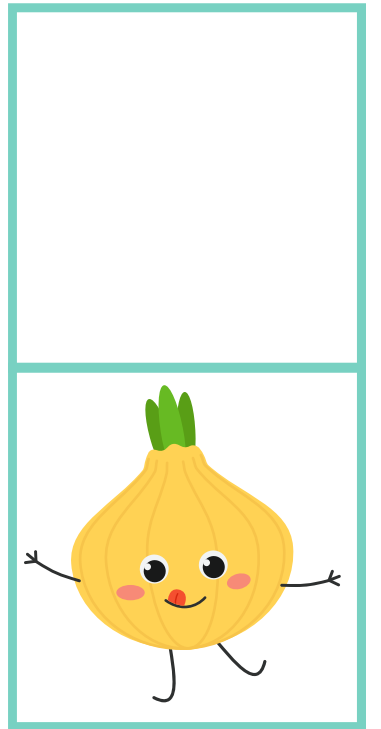
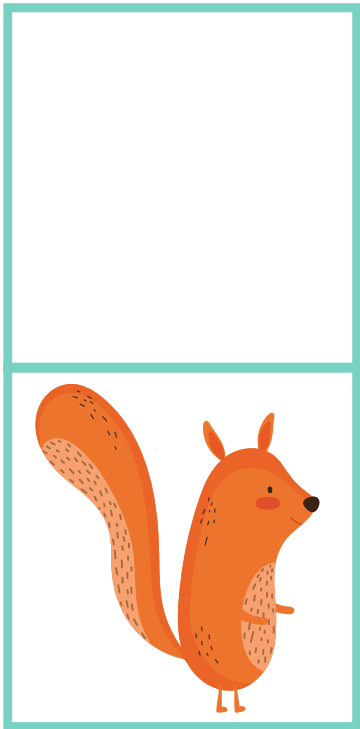
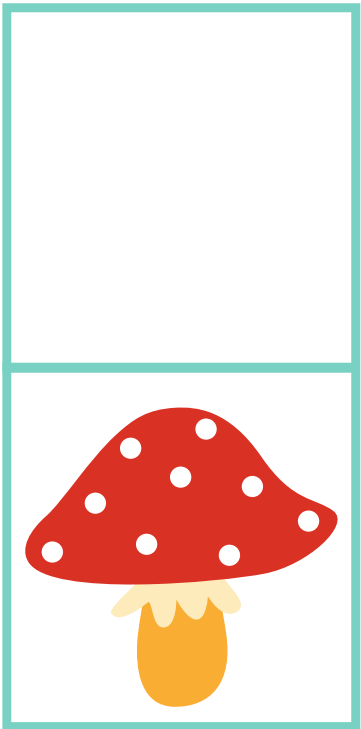
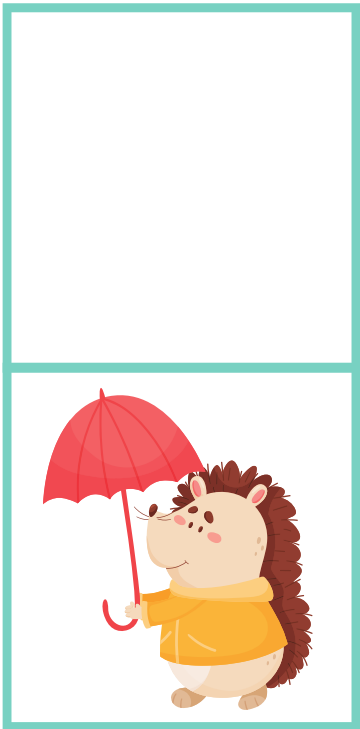
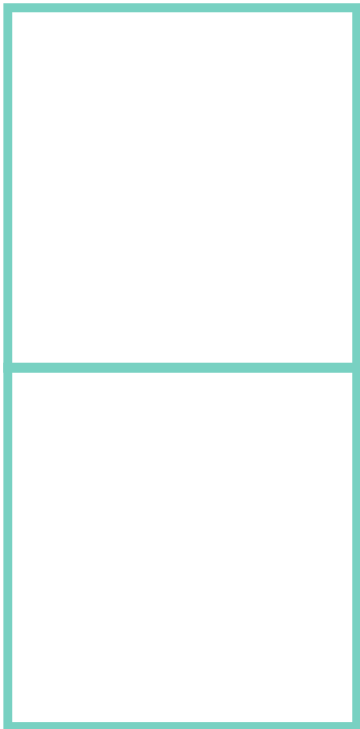


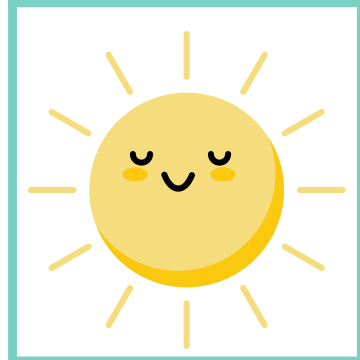
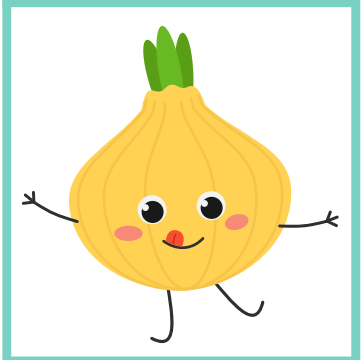
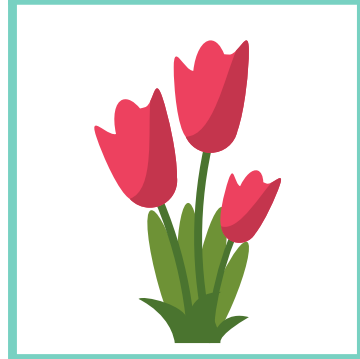
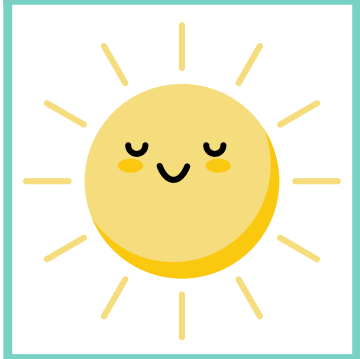
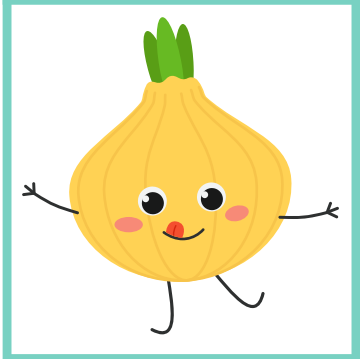
# Jeu de dominos doux printemps

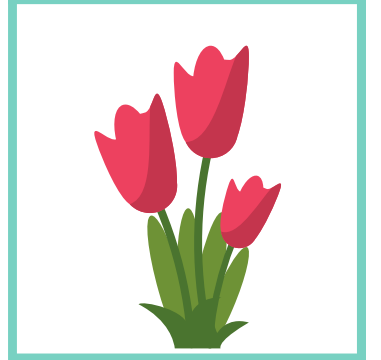
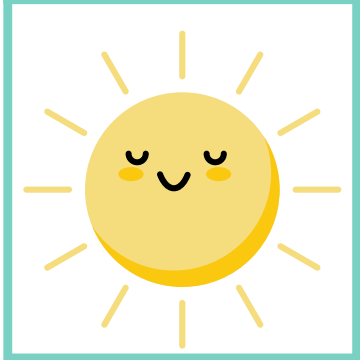
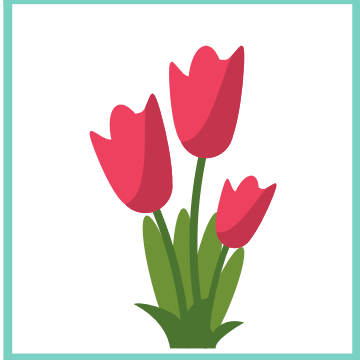
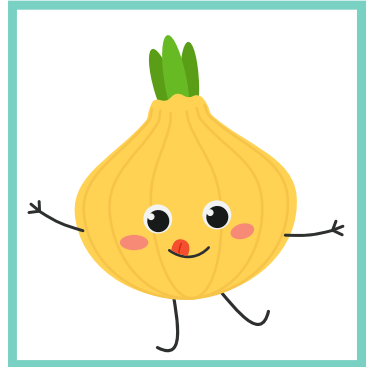
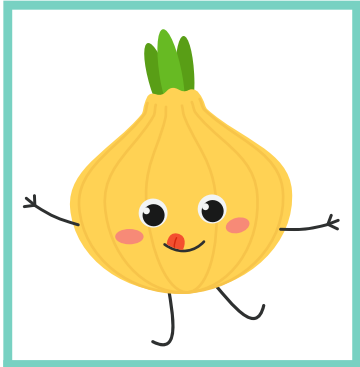
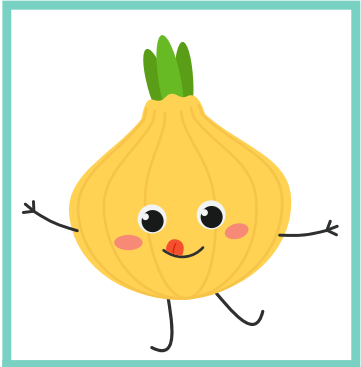
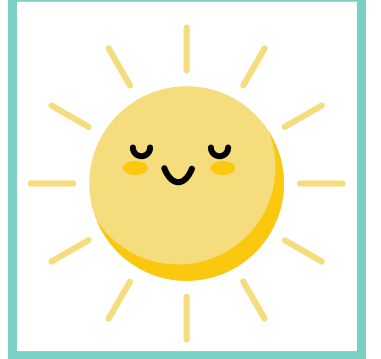
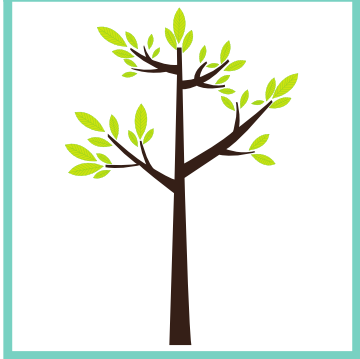
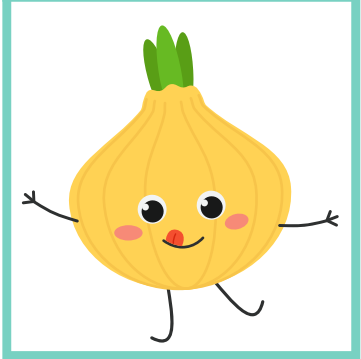
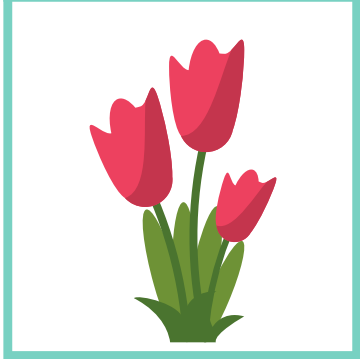
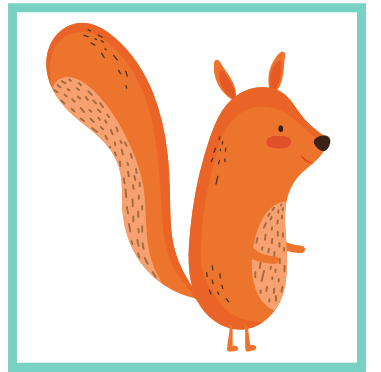


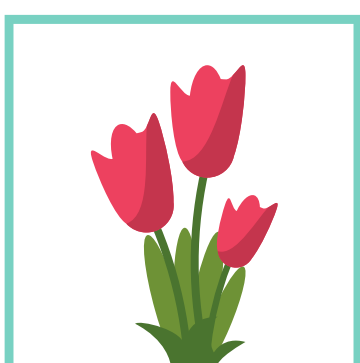
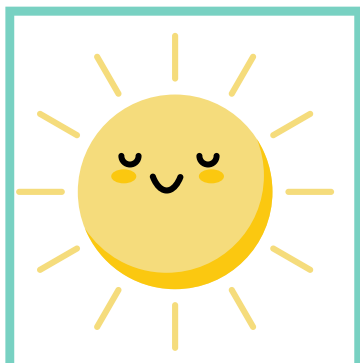
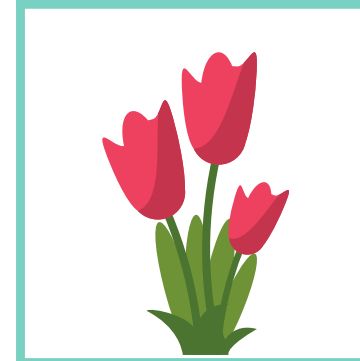
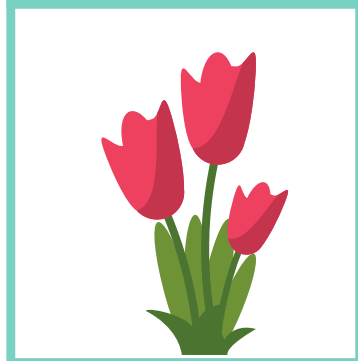
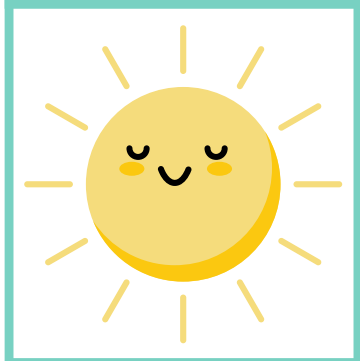
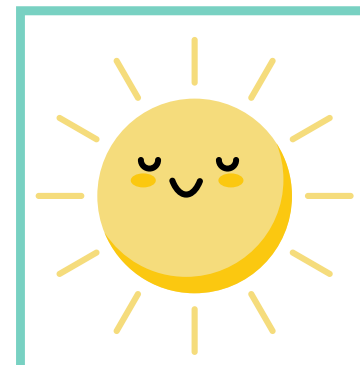
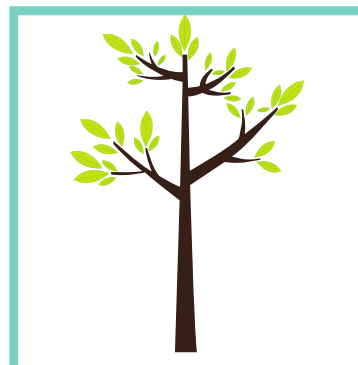
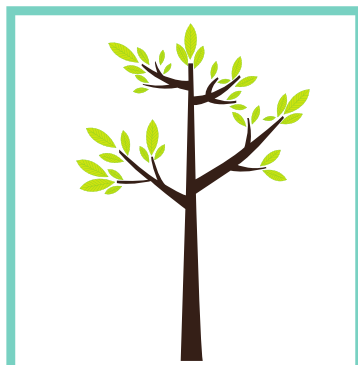
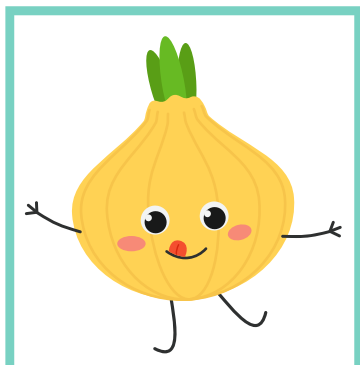
45 pièces  
2 à 6 joueurs











## 45 pièces à découper et plastifier

### Règles :

- Mélangez les dominos face contre table.
- Distribuez 7 dominos au hasard pour 2 joueurs (6 dominos pour 3-4 joueurs et 5 dominos pour 5-6 joueurs).
- Le reste des dominos forment la pigne.
- Le premier joueur qui nomme la saison en cours pose un domino de son choix au centre de la table. S'il a un double il pose celui-ci.
- Chacun son tour, un joueur pose un domino à l'une des extrémités, là où un domino a la même image.
- Lorsqu'on n'a pas de domino qui convient, on pige un nouveau domino.
- Le gagnant est celui qui réussira à poser sa dernière pièce en premier.