

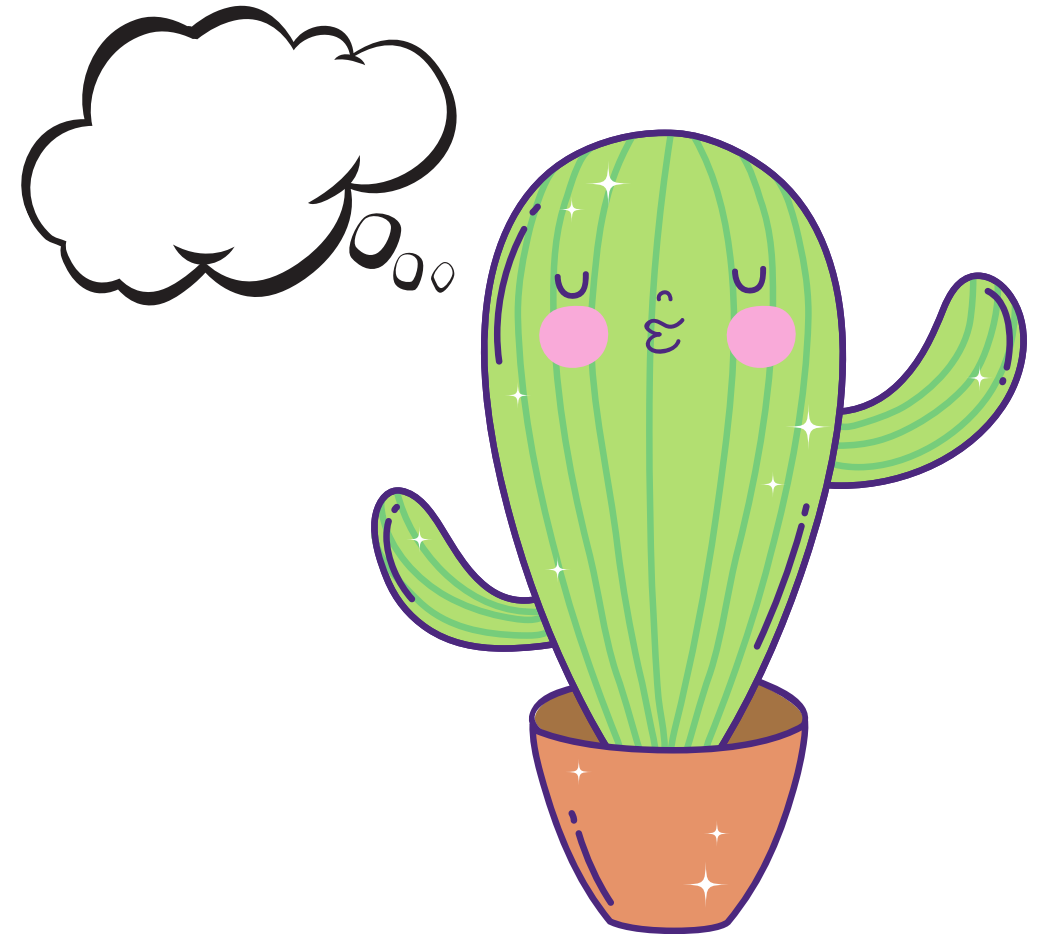
Comment je me sens ?



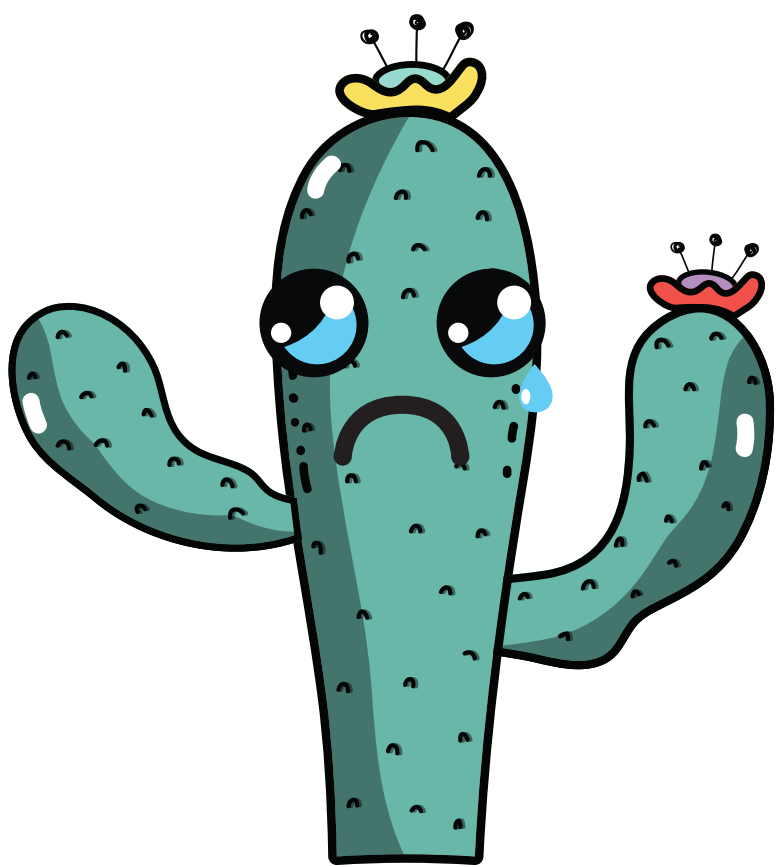
ESPIÈGLE



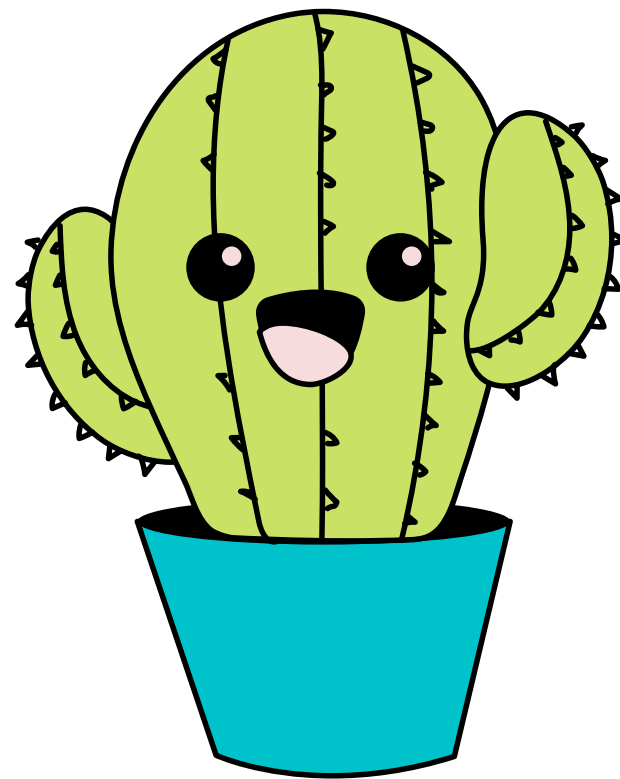
EN CONTRÔLE



RÊVEUR / RÊVEUSE



TRISTE



JOYEUX / JOYEUSE



MALADE



FATIGUÉ(E)



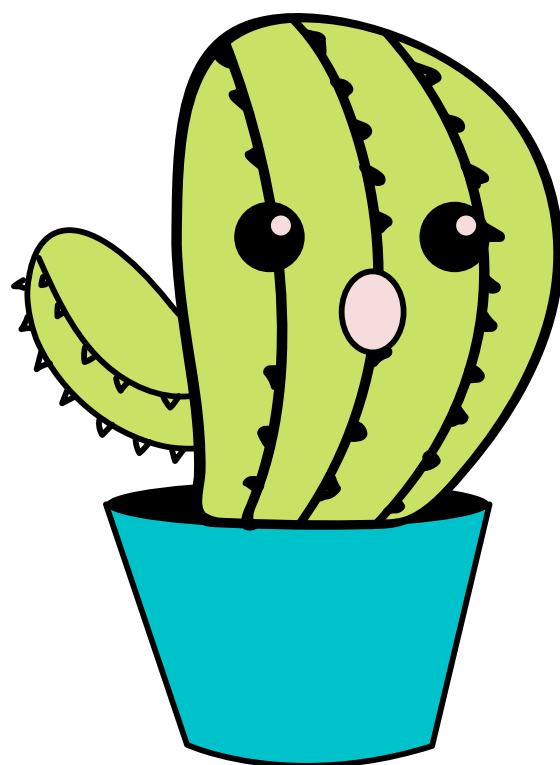
INQUIET / INQUIÈTE



BIZARRE (?)



FIER / FIÈRE



EFFRAYÉ(E)



EN COLÈRE