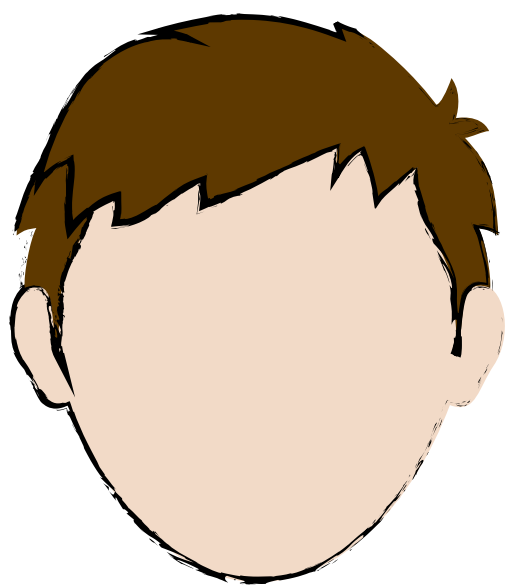




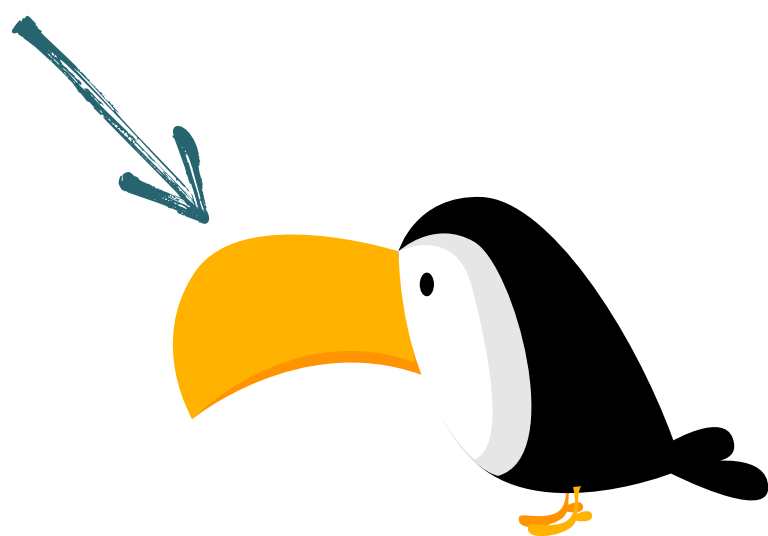
ALOUETTE



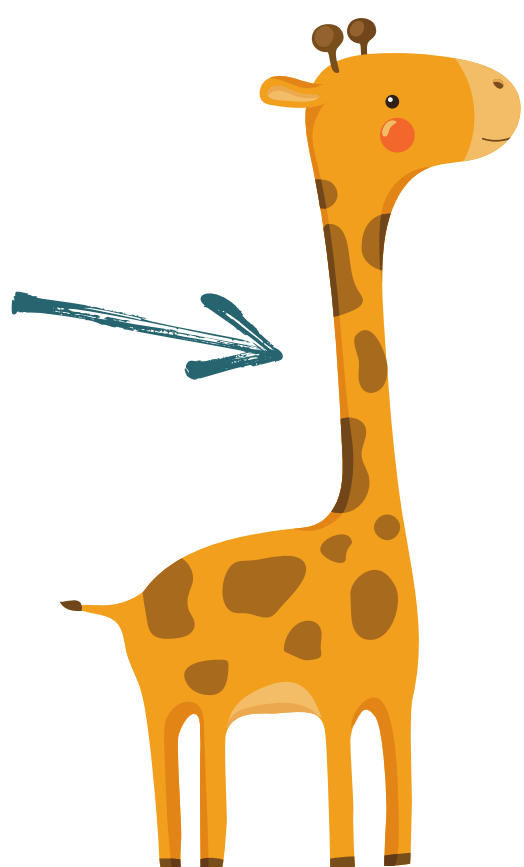
TÊTE



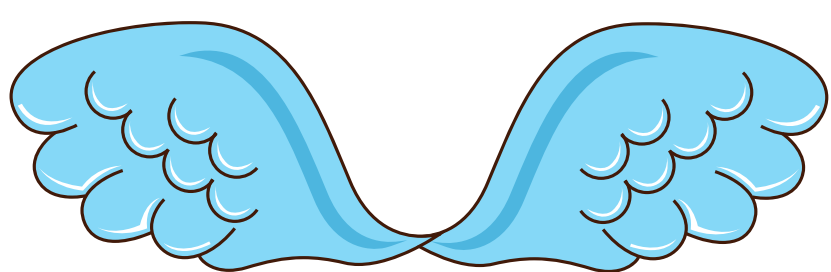
YEUX



BEC



COU



AILES

Alouette



, gentille alouette,
Alouette, je t'y plumerai.

Je t'y plumerai la 

Je t'y plumerai la tête

Et la , et la tête

Alouette, 
Ahhh!



, gentille alouette,
Alouette, je t'y plumerai.

Je t'y plumerai les 

Je t'y plumerai les yeux

Et les , et les yeux

Alouette, 
Ahhh!

...le 

...le 

...les 